

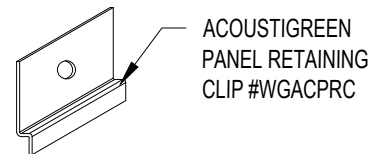
PANEL RETAINING CLIPS #WGACPRC W/ #8x5/8" PAN HEAD SCREWS

WHEN INSTALLING STAGGER JOINTS HORIZONTALLY OVER FURRING STRIPS

WALL SUBSTRATE (BY OTHERS)

OPTIONAL ACOUSTICAL BACKER

FURRING STRIPS 24" O.C. MAX. (BY OTHERS)



ACOUSTIGREEN PANEL RETAINING CLIP #WGACPRC

1 WALL PLANK - HORIZONTAL MOUNT
SCALE: 1 1/2" = 1'-0"

2 RETAINING CLIP
SCALE: 6" = 1'-0"



acoustigreen

123 Columbia Court North Chaska, MN 55318 (888) 258 4637

COPYRIGHT ACOUSTIGREEN © 2015

DRAWING NAME:

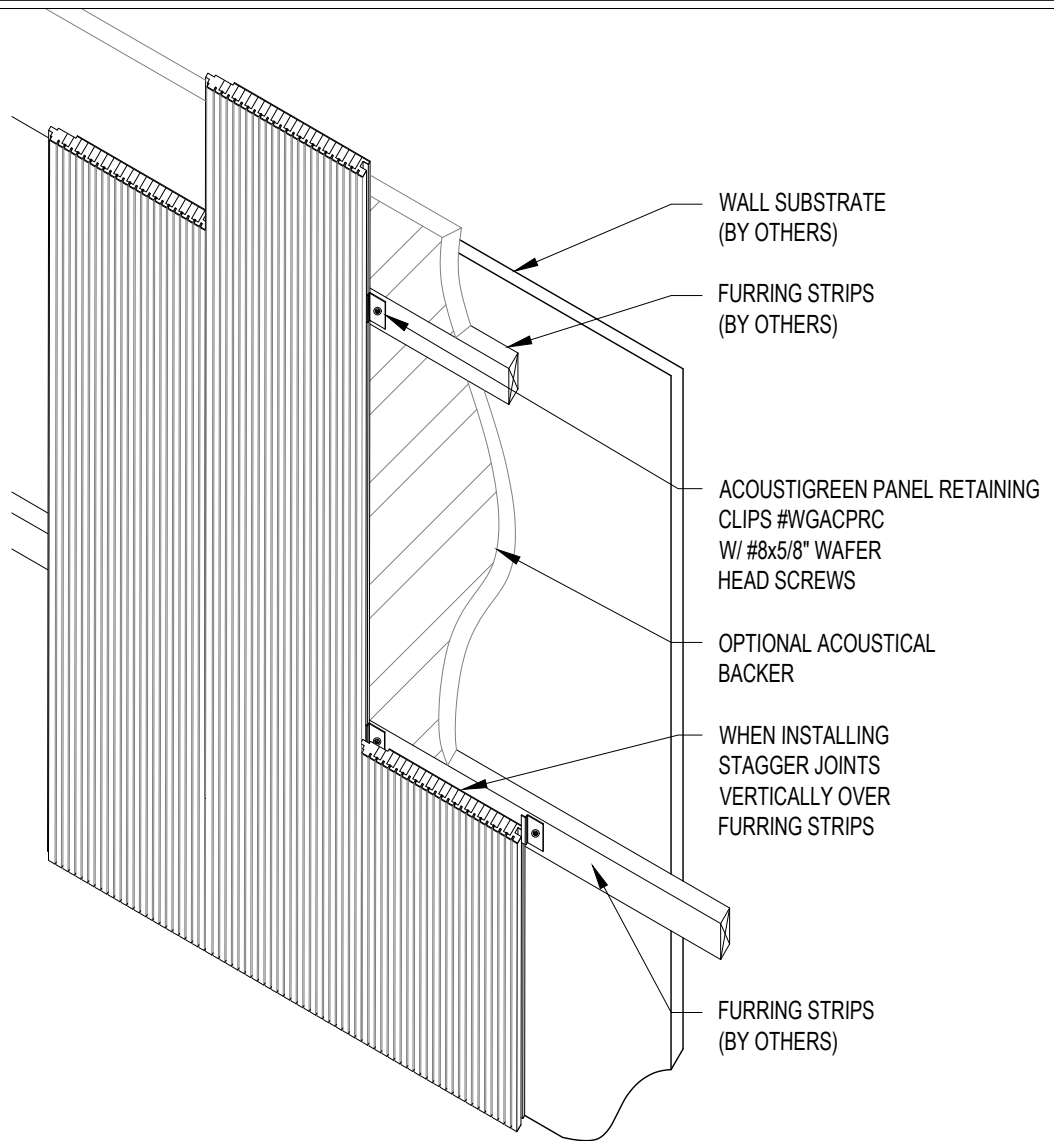
AUDITION TONGUE & GROOVE WALL HORIZONTAL PLANK SYSTEM

DRAFTED BY: BCO

LAST REVISED: 1/28/16

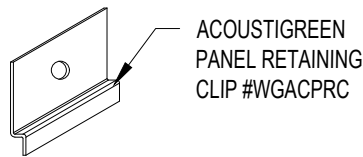
SCALE: AS NOTED

DO NOT SCALE DRAWING. FIGURED DIMENSIONS ARE TO BE FOLLOWED. READ THIS DRAWING IN CONNECTION WITH GENERAL ARCHITECTURAL PLANS, STRUCTURAL PLANS, AND OTHER RELATED DRAWINGS. THESE DRAWINGS REPRESENT ACOUSTIGREEN'S UNDERSTANDING AND INTERPRETATION OF THE ARCHITECTURAL DRAWINGS AND HOW ACOUSTIGREEN PRODUCTS RELATE TO THE PROJECT.



1 WALL PLANK - VERTICAL MOUNTING

SCALE: 1 1/2" = 1'-0"



ACOUSTIGREEN
PANEL RETAINING
CLIP #WGACPRC

2 RETAINING CLIP

SCALE: 6" = 1'-0"



acoustigreen

123 Columbia Court North Chaska, MN 55318 (888) 258 4637

COPYRIGHT ACOUSTIGREEN © 2015

DRAWING NAME:

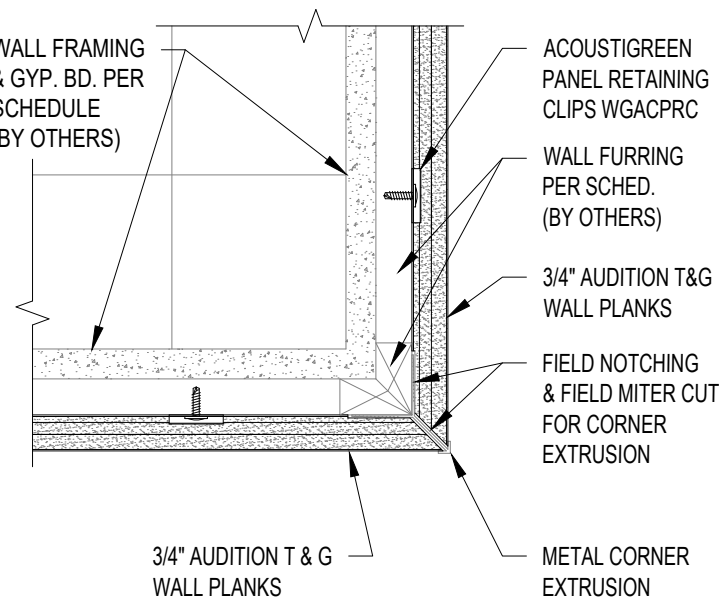
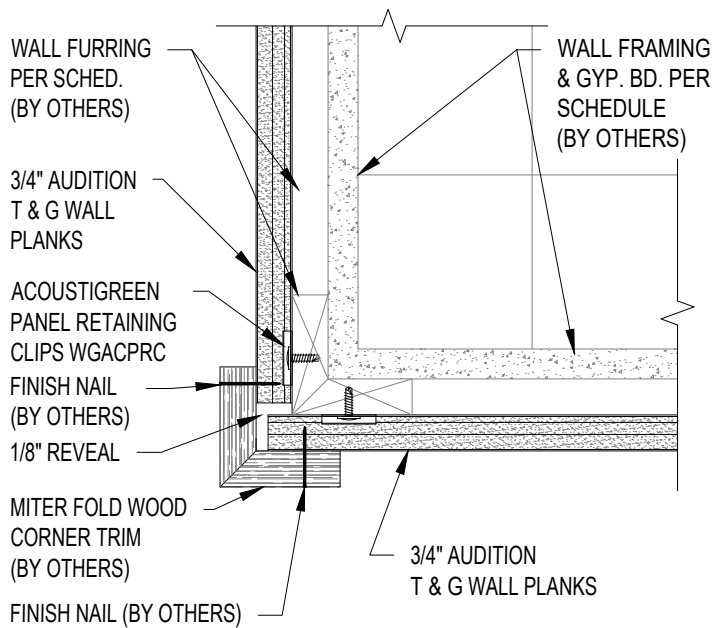
AUDITION TONGUE & GROOVE WALL VERTICAL PLANK SYSTEM

DRAFTED BY: BCO

LAST REVISED: 1/28/2016

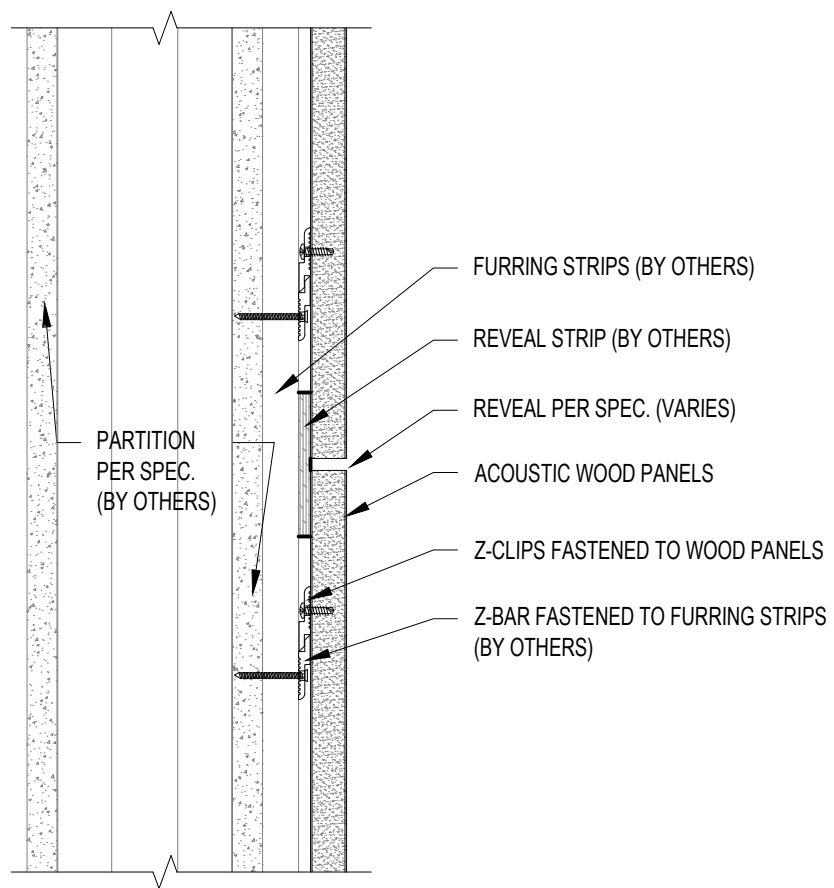
SCALE: AS NOTED

DO NOT SCALE DRAWING. FIGURED DIMENSIONS ARE TO BE FOLLOWED. READ THIS DRAWING IN CONNECTION WITH GENERAL ARCHITECTURAL PLANS, STRUCTURAL PLANS, AND OTHER RELATED DRAWINGS. THESE DRAWINGS REPRESENT ACOUSTIGREEN'S UNDERSTANDING AND INTERPRETATION OF THE ARCHITECTURAL DRAWINGS AND HOW ACOUSTIGREEN PRODUCTS RELATE TO THE PROJECT.



1 WALL CORNER DETAIL
SCALE: 3" = 1'-0"

2 WALL CORNER DETAIL
SCALE: 3" = 1'-0"



3 WALL SECTION
SCALE: 3" = 1'-0"